

# FW10 Intelligent Shoeprint Scanning System

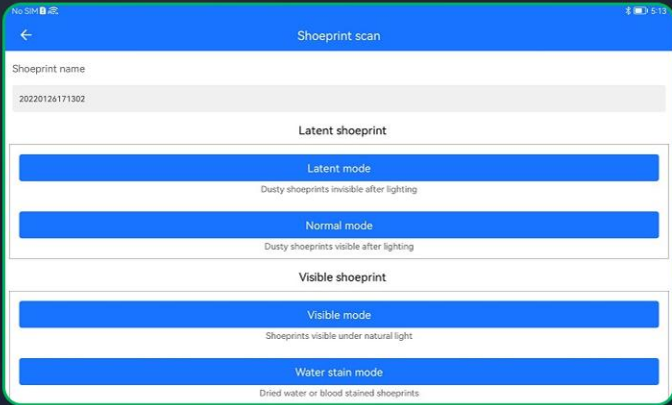
- Innovative technique for acquiring latent shoeprint with neither physical contact nor use of gelatin lifer
- Designed for CSI application with quick setup
- Detect challenging latent shoeprints even invisible with shoeprint light source

## Designed Scanning for

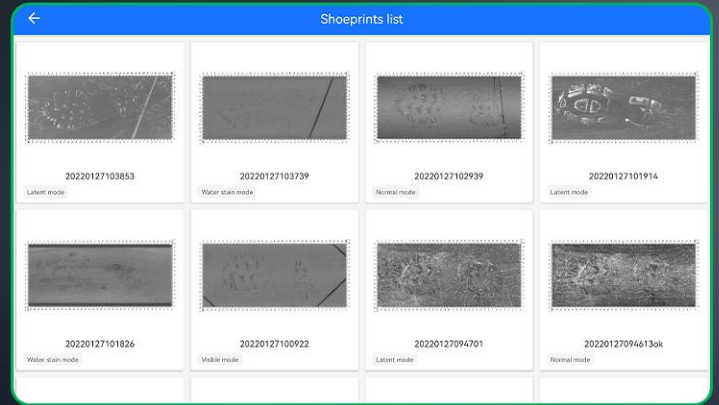
• Dust Shoeprint

• Blood Shoeprint

• Wet Shoeprint



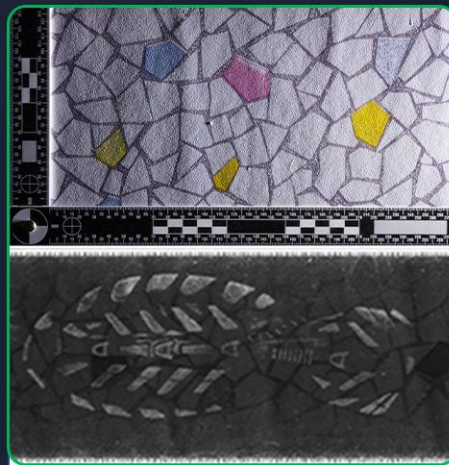
User Friendly GUI for Scanning shoeprint



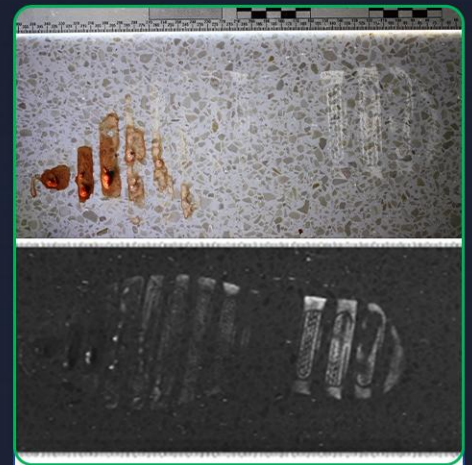
Scanned Shoeprint Gallery



Scanned  
Dust shoeprint on marble floor



Scanned Dust footprint on plastic flooring  
with colorful pattern



Scanned bloodstain shoeprint on  
tile floor

### Technical Data

Scanning control and shoeprint Display	Android Tablet
Scanning area	365x160mm(14.4x6.3in)
Scanning Image Resolution	1200dpi
Output image format	BMP
Scanning time	Under 50s
Networking	Wi-Fi
Battery run time	2 hrs
Weight	7kg(14.4lb)
Size	320x380x168mm(12.6x15x6.6in)